

**ESTEL**



**BANYA**

---

**BY BABAYAGA**

**Hair wrap  
based on natural ingredients**

# KEY BENEFITS OF ESTEL BANYA WRAP:



## Effective natural ingredients

The products contain extracts of traditional plants that perfectly suit any hair type. The formulations include birch sap, extracts of lungwort and currant, cedar resin, and juniper berry oil.



## 2 treatments in 1

Wrap with a lamination effect and wrap with a reconstruction effect.



## High performance

Addresses the most critical problems: hair porosity and breakage, split ends, dullness and dryness, lack of gloss, and loss/slow growth of hair.



## Express action

Result in 10 minutes.

## ESTEL BANYA wraps:

Application of a nourishing formulation containing natural botanicals.

Wrapping hair with film (a special cap) for faster and more effective penetration of precious elements into the hair structure.



# WRAP WITH A RECONSTRUCTION EFFECT

- Strength
- Smoothness
- Ideal ends

## Step 1

### Micellar shampoo



- Gently cleanses
- Restores the moisture balance

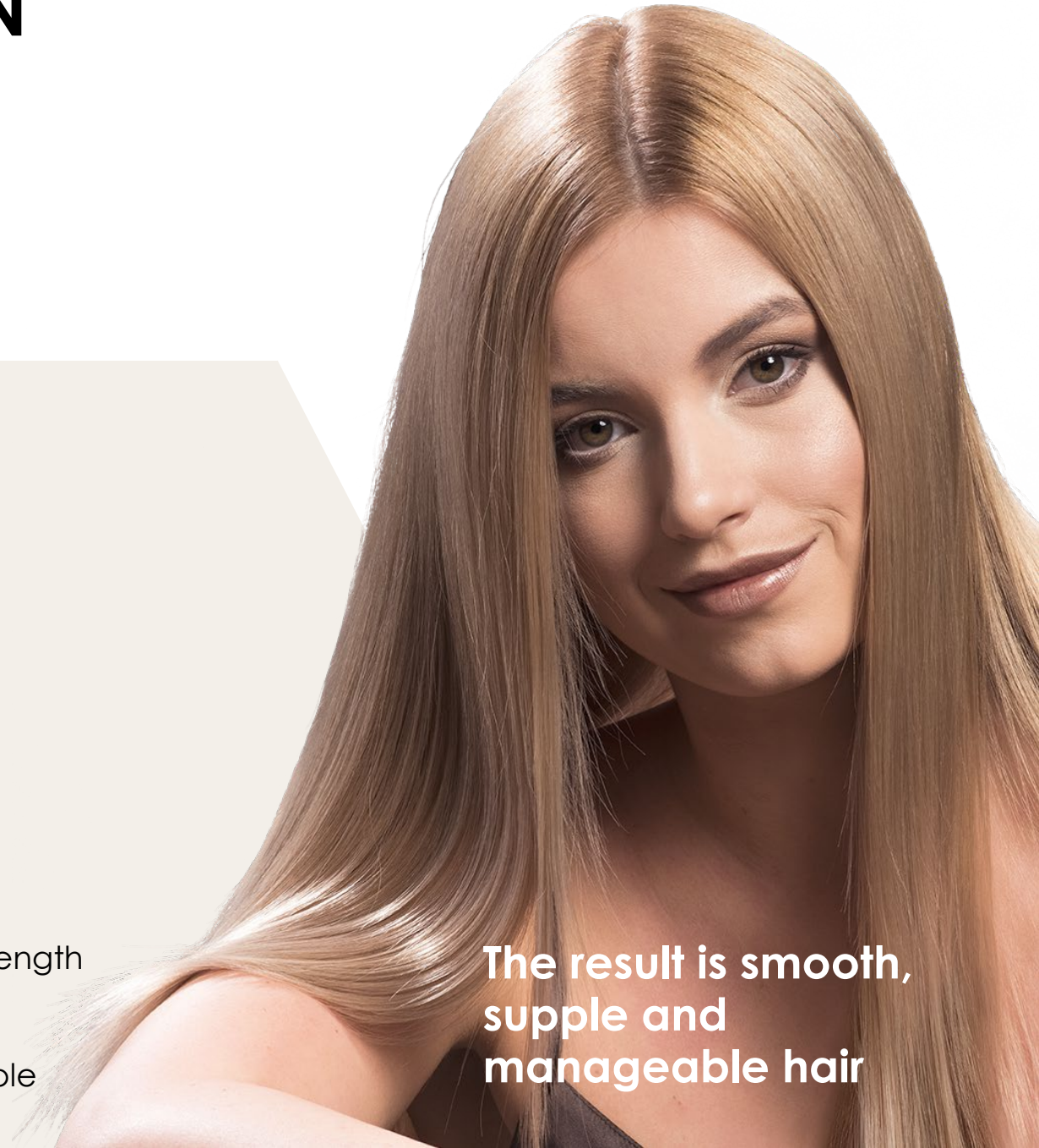
## Step 2

### Repairing wrap mask



- Repairs hair over the entire length
- Seals split ends
- Makes hair smooth and supple

The result is smooth, supple and manageable hair



# WRAP WITH A LAMINATION EFFECT

- Density • Softness • Gloss

## Step 1

### Micellar shampoo



- Gently cleanses
- Restores the moisture balance

## Step 2

### Strengthening wrap mask



- Makes hair soft
- Visibly thickens hair along the full length
- Enhances gloss

**The result is glossy, silky and dense hair.**



6

Remove the film. Rinse carefully with water at a temperature you find comfortable. Remove excess moisture with a towel. Dry and style the hair.



1

Apply **ESTEL BANYA Micellar Shampoo**, make thick foam and massage the scalp.



2

Rinse. Wrap hair in a towel to remove excess moisture.



# INSTRUCTIONS

5

Leave the mask for 5–10 minutes. For deeper penetration of the mask into the hair structure, wrap the hair with polyethylene film.



**DO NOT USE  
ADDITIONAL HEAT –  
HOOD DRYER/CLIMAZONE/HAIRDRYER**

4

Apply **ESTEL BANYA Wrap Mask** to the hair and thoroughly spread it along the full length.



3

Offer your client a wrap with a lamination or reconstruction effect depending on their preferences, hair type and color.



## WRAP WITH A LAMINATION EFFECT

## WRAP WITH A RECONSTRUCTION EFFECT

thinned and dull hair



**Perfect  
for**

weak and damaged hair

visible texture density



**WOW  
effect**

sealing of split ends

cedar resin, birch buds,  
blackcurrant, and  
black chokeberries.



**Formulatio  
n**

birch sap, linden blossom,  
white currant, and lungwort